

1/2" QUICK-FIX® KITS

THE FAST, PERMANENT SOLUTION FOR REPAIRING YOUR DAMAGED AIR BRAKE LINES



FEATURES & BENEFITS

- Tramec Sloan's Hose End Repair Kits are the First & Best of Their Kind
- Durable, All-Brass Construction
- Each Pack Will Repair Two Damaged 1/2" Rubber Air Brake Lines
- Quick-Fix Makes Field Repairs Easy, Reducing Downtime
- Meets DOT 106 & SAE J1402 Requirements
- Available with 3/8" or 1/2" Live Swivel Fittings
- Features Pre-Applied Thread Sealant and Greased Barbs
- Designed & Made in the USA!
- Includes Step-by-Step, Illustrated Instructions for Installation



Forget the Tape & Zip Ties...

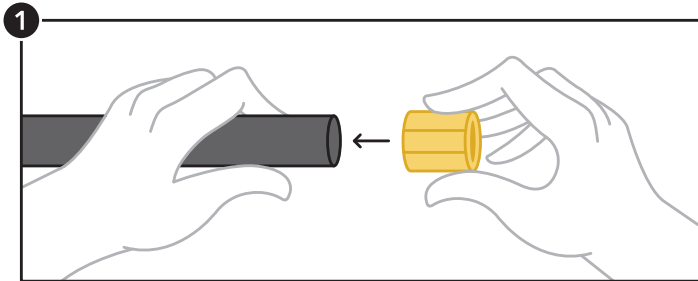


Quick-Fix® is the **smart, safe way** to repair your damaged hose lines. Keeping a kit on hand makes field repairs fast and easy.

P/N	DESCRIPTION
431408	3/8" NPTF Brass Quick-Fix Kit
431408-100	100 Unpackaged 3/8" NPTF Brass Quick-Fix Assemblies
431410	1/2" NPTF Brass Quick-Fix Kit
431410-100	100 Unpackaged 1/2" NPTF Brass Quick-Fix Assemblies

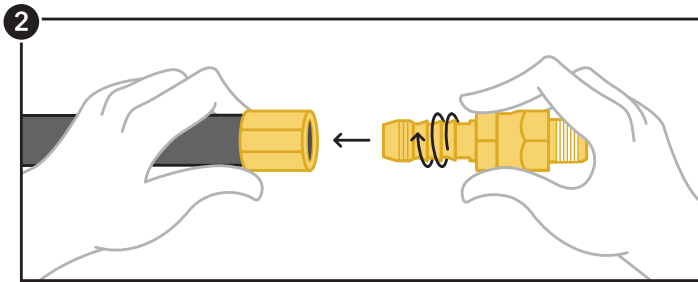
1/2" QUICK-FIX® KITS

1/2" QUICK-FIX® INSTALLATION INSTRUCTIONS



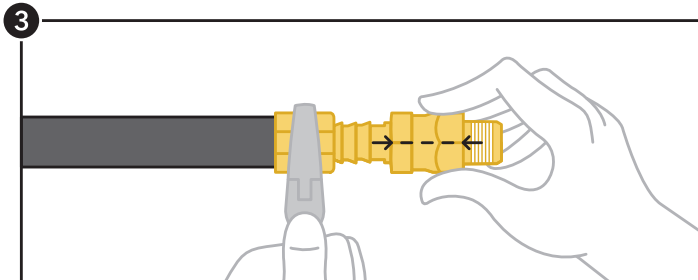
STEP ONE

Trim the damaged hose end square and push the brass sleeve onto the hose until flush.



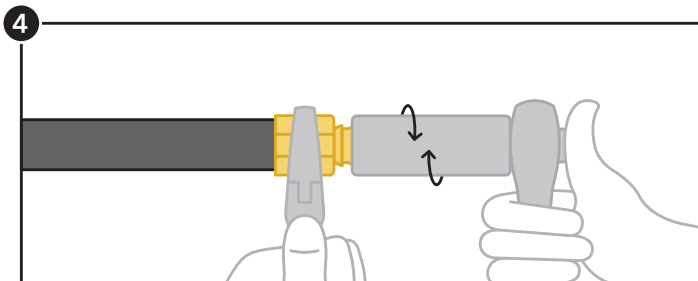
STEP TWO

Place the greased barb into the sleeve, pushing and turning the barb to start the threads.



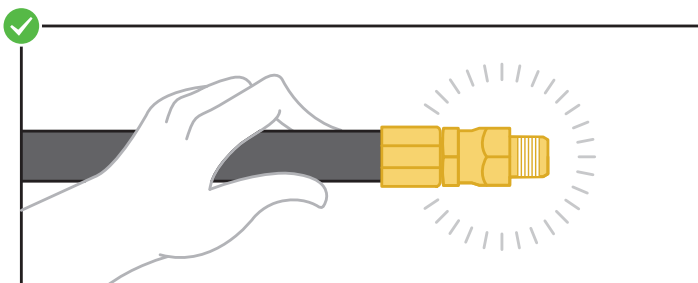
STEP THREE

Holding the sleeve in place (a wrench may be necessary here), align the barb and swivel hexes.



STEP FOUR

Continue to hold the sleeve and place a 7/8" deep well socket over the swivel hex and onto the barb hex. Screw the barb hex in using a socket (or crescent) wrench.



DONE!

Once the barb is flush to the top of the sleeve, your new hose end is complete and ready for installation.