

# ZINC RECEPTACLES

## DIE-CAST J560 RECEPTACLES & ADAPTERS

### RECEPTACLE & ADAPTER BOX KITS

- Kits Include Gasket, Grommet, and Receptacle Mounting Screws
- Kits Do Not Include Box Mounting Hardware

RECEPTACLES WITH 2" BOXES	SOLID-PIN P/N	SPLIT-PIN P/N
Receptacle without Circuit Breakers	38802	38803
Receptacle with 15A Circuit Breakers	38820	38821
Receptacle with 20A Circuit Breakers	38822	38823
Receptacle with 30A Circuit Breakers	38824	38825

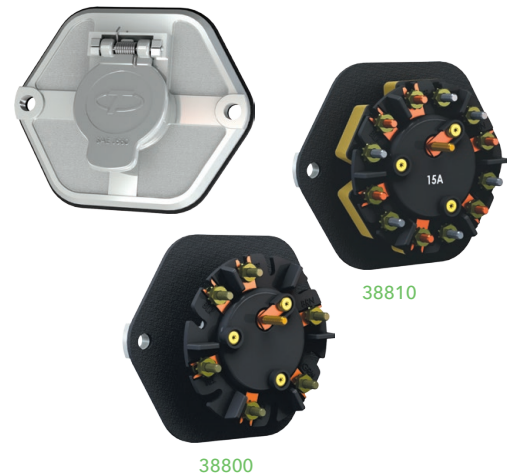


RECEPTACLES WITH 3" BOXES	SOLID-PIN P/N	SPLIT-PIN P/N
Receptacle without Circuit Breakers	38804	38805
Receptacle with 15A Circuit Breakers	38830	38831
Receptacle with 20A Circuit Breakers	38832	38833
Receptacle with 30A Circuit Breakers	38834	38835

### 7-WAY RECEPTACLE SYSTEMS

- SAE J560 Style Receptacles
- Bodies Made of Die-Cast Zinc with Stainless Steel Hinge Pin & Spring
- Receptacle Inserts are O-Ring Sealed and Self-Grounding
- Tramec Sloan Recommends Ring Terminals for the Connection Between Wires and Receptacle Pins for Positive Mechanical Connections
- Receptacle Gaskets are Included
- Industry Standard Mounting Dimensions

RECEPTACLES WITHOUT BOXES	SOLID-PIN P/N	SPLIT-PIN P/N
Receptacle without Circuit Breakers	38800	38801
Receptacle with 15A Circuit Breakers	38810	38811
Receptacle with 20A Circuit Breakers	38812	38813
Receptacle with 30A Circuit Breakers	38814	38815



### SURFACE-MOUNTED ADAPTER BOXES

- Bodies Made of Die-Cast Zinc
- Nominal 2" and 3" Depth Options Fit Industry Standard Hole Pattern
- 3" Deep Box has a Double Grommet
- Kits Include Gasket, Grommet, and Receptacle Mounting Screws

DESCRIPTION	2" DEEP P/N	3" DEEP P/N
Die-Cast Zinc Adapter Box	38860	38861

