

# SMART BOX<sup>®</sup>

## REPAIR RECEPTACLES THE SMART WAY WITH TRAMEC SLOAN'S SMART BOX<sup>®</sup>

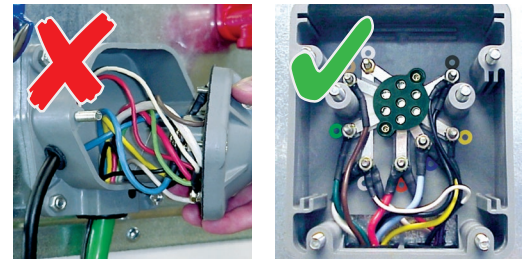


### STILL REPAIRING YOUR RECEPTACLES THE OLD "SPAGHETTI BALL" WAY?

You no longer have to re-wire the nose box when replacing a damaged receptacle. Instead of attaching all of the wires directly to the J560 receptacle, they are attached permanently in the bottom of the box, connected to a central outlet.

The replacement receptacle simply plugs in and secures with two fasteners - the wiring remains connected and undisturbed.

- No More Spaghetti Ball of Wires that Might be Damaged.
- No More Mis-Routed or Mis-Wired Circuits.
- No More Shorts or Intermittent Open Circuits Caused by Loose Connections.



### SMART BOX<sup>®</sup> CONNECTOR:

- Fits standard mounting bolt pattern (Box with cover is 2-1/4" deep).
- Two cable entry grommets.
- #10 studs provide capacity for multiple terminals.
- Wiring remains stationary on studs inside the box.
- No need to disturb wiring when replacing the receptacle.
- Receptacle simply plugs in and secures with two nuts.
- Brass jumpers bridge from the studs to the receptacle pins.
- Stainless steel springs around the terminals grip the pins.
- Recessed mount boxes hold square-neck bolts from the back for mounting on adapter plates such as the 3850024.

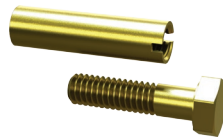
# SMART BOX®

## SMART BOX® PART NUMBERS

P/N	DESCRIPTION
38520	Box and Receptacle - Surface Mount, Solid Pin
38521	Box and Receptacle - Surface Mount, Split Pin
38526	Box and Receptacle - Recessed Mount, Solid Pin
38527	Box and Receptacle - Recessed Mount, Split Pin
38501	Replacement Receptacle - Solid Pin
38502	Replacement Receptacle - Split Pin
38720	Box and Receptacle - ISO Style
38707	Replacement Receptacle - ISO Style
3850031	Adapter Box Only - Surface Mount
3850041	Adapter Box Only - Recessed Mount
3850032	Box Kit - Surface Mount
3850042	Box Kit - Recessed Mount
3850008	Cover Gasket
3850015	Anodized Aluminum Cover Plate



3850031 SMART BOX Adapter



3850029 Extension Adapter Kit



38501 Receptacle

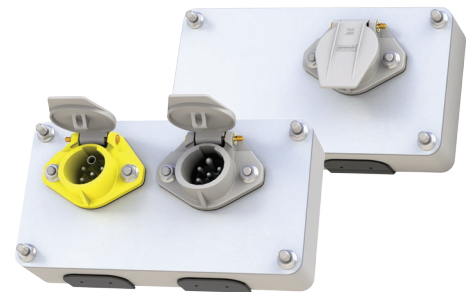


38707 Receptacle (ISO Style)

**Box Kits** (3850032 and 3850042) include a box, gasket (3850008), aluminum cover plate (3850015), and two each grommets (3826004), bolts (3826021), and nuts (3856020).

**Extension Bolt Kit** (3850029) includes adapters and bolts (4 each) to allow retrofit onto existing short 5/16-18 trailer nose box bolts.

### ALSO AVAILABLE: DUAL & JUMBO SMART BOX®



Tramec Sloan, LLC.  
TRAMECSLOAN.COM  
P: 800.336.7778  
F: 877.286.6515

LIT-FS-34 | V. 092115