

# 3/8" QUICK FIX® KITS

## A PERMANENT SOLUTION FOR YOUR DAMAGED AIR BRAKE LINES



### FEATURES & BENEFITS

- Not just a temporary fix, but a permanent solution!
- One package will repair two 3/8" rubber air brake lines
- Meets **DOT 106** and **SAE J1402** requirements
- Available with 3/8" or 1/2" male fittings (for use with 3/8" rubber hose only)
- Quick-Fix assemblies in clamshell packaging feature pre-applied thread sealant and includes installation tool
- Packaged in point of purchase display pack



### 3/8" HOSE QUICK-FIX® KITS

ALSO AVAILABLE FOR 1/2" HOSE!

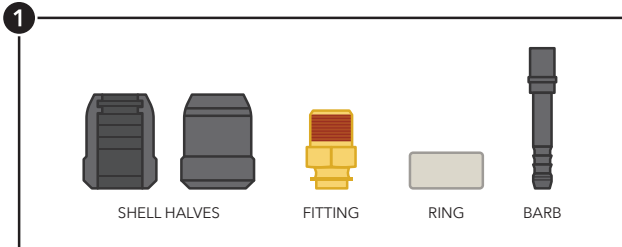
P/N	QTY	PACKAGE	FITTING	TOOL	SEALANT	DISPLAY
431402	1 Pack	Clamshell	3/8"	✓	✓	-
431402-12	12 Packs	Clamshell	3/8"	✓	✓	-
431402-100	100 Assemblies	Unpackaged	3/8"	-	✓	-
431403	1 Pack	Clamshell	1/2"	✓	✓	-
431403-12	12 Packs	Clamshell	1/2"	✓	✓	-
431403-100	100 Assemblies	Unpackaged	1/2"	-	✓	-
431405	12 Packs	Clamshell	3/8"	✓	✓	✓
431405D	-	-	-	-	-	Display Only
431406	12 Packs	Clamshell	1/2"	✓	✓	✓
31402*	2 Assemblies	Tube	3/8" NPTF	-	-	-
31403*	2 Assemblies	Tube	1/2" NPTF	-	-	-
31407*	2 Assemblies	Tube	3/8" NPTF & 1/4" NPTF Adapter	-	-	-
31408*	1 Assembly	Tube	3/8" NPTF with 3-1/2" Spring Guard Length	-	-	-
31409B*	1 Assembly	Tube	3/8" NPTF with 3-1/2" Spring Guard Length	-	-	-
31410*	1 Assembly	Tube	3/8" End Fitting + 1/4" NPTF Adapter + 1/2" NPTF Reducer + 3/8" x 3/8" NPTF Coupler	-	-	-

\* When using with gladhands add the suffix "B" to the part number for a brass barb

\* For pre-applied thread sealant add the prefix "P" to the part number

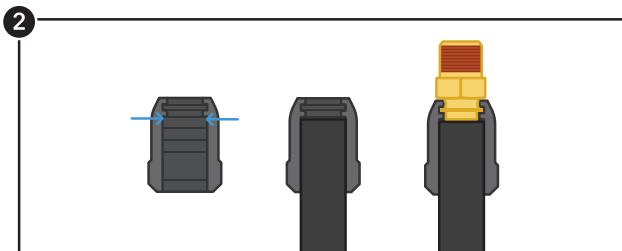
# 3/8" QUICK FIX® KITS

## 3/8" QUICK-FIX® INSTALLATION INSTRUCTIONS



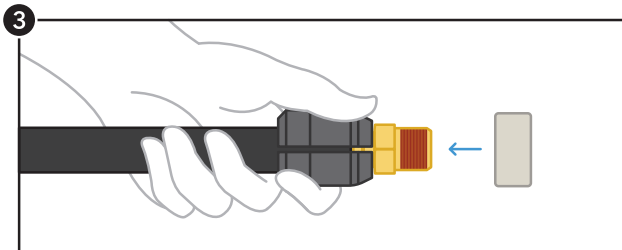
### STEP ONE

Disassemble the Quick Fix Kit.



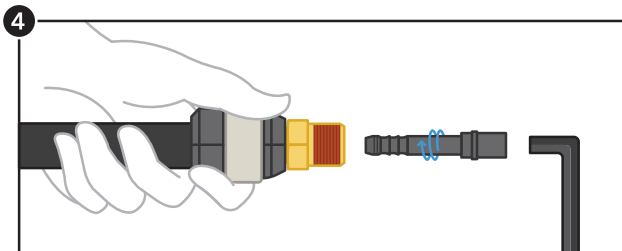
### STEP TWO

Place trimmed hose end flush against the groove inside one shell half (see arrows) then insert fitting into lock groove.



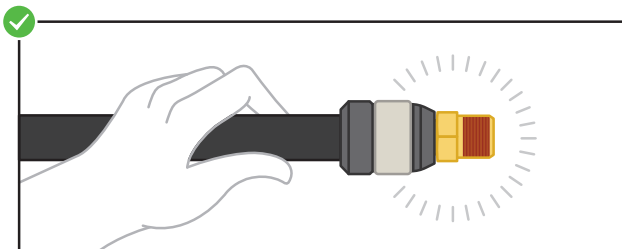
### STEP THREE

Place the other shell half over the hose and fitting. Holding shells in place, slide ring over, pushing and turning until in place.



### STEP FOUR

Insert barb into fitting, pushing and turning to start the threads. Using the supplied wrench (5/16" hex key), continue to push and turn barb.



### DONE!

Once the barb is flush inside the fitting, your hose end is complete and ready for installation.

NOTE: Check final assembly visually to insure that hose has not shifted position during assembly



Tramec Sloan, LLC.  
TRAMECSLOAN.COM  
P: 800.336.7778  
F: 877.286.6515

LIT-FS-13 | V. 092115