

# 1/2" QUICK FIX<sup>®</sup>

## PERMANENT SOLUTIONS FOR DAMAGED AIR BRAKE LINES



### FEATURES & BENEFITS

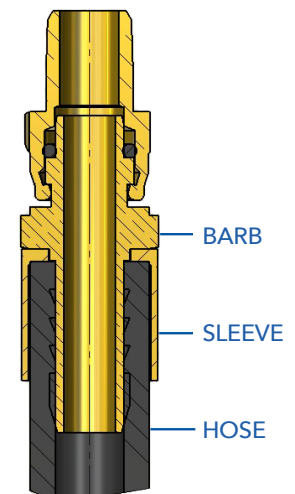
- All-Brass Construction of the Sleeve and Barb
- Permanent Live Swivel
- One Package Will Repair Two Damaged 1/2" Rubber Air Brake Lines
- Available with 3/8" or 1/2" Male Fittings
- Pre-Applied Thread Sealant
- Both Barbs are Greased to Make Installation Easier
- Packaged in Tubes for Easy Shelf Display
- Each Packaged Tube Contains Step-by-Step Instructions for Installation



ALSO AVAILABLE FOR 3/8" HOSE!

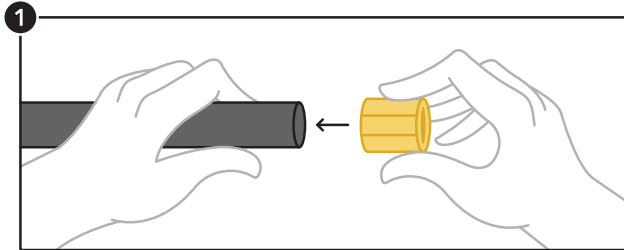
### 1/2" QUICK FIX KITS

P/N	DESCRIPTION
431408	1/2" x 3/8" NPTF Hose Quick Fix Kit
431408-100	1/2" x 3/8" NPTF Hose Quick Fix, 100 pcs, Bulk Unpackaged
431410	1/2" x 1/2" NPTF Hose Quick Fix Kit
431410-100	1/2" x 1/2" NPTF Hose Quick Fix, 100 pcs, Bulk Unpackaged



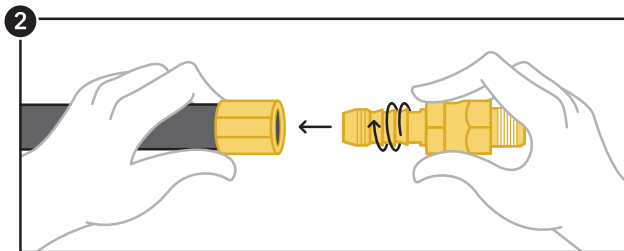
# 1/2" QUICK FIX®

## 1/2" QUICK-FIX® INSTALLATION INSTRUCTIONS



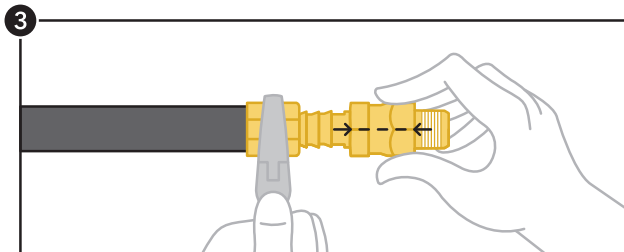
### STEP ONE

Trim the hose end square and push the sleeve onto the end until flush.



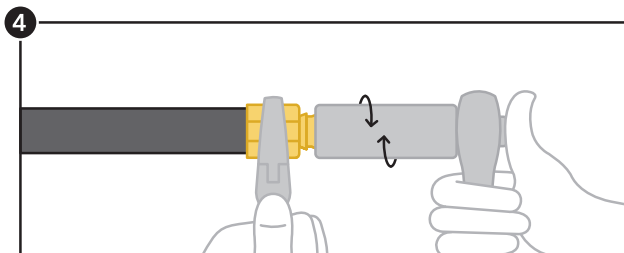
### STEP TWO

Place greased barb into sleeve, pushing and turning the barb to start the threads.



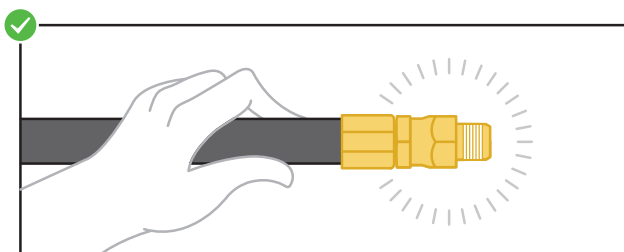
### STEP THREE

Holding sleeve in place (a wrench may be necessary), align barb and swivel hexes.



### STEP FOUR

Continue to hold sleeve and place a 7/8" deep well socket over swivel hex and onto barb hex. Screw the barb hex in using a socket wrench (or a crescent wrench).



### DONE!

Once the barb hex is flush to the top of the sleeve, your hose end is complete and ready for installation.



Tramec Sloan, LLC.  
TRAMECSLOAN.COM  
P: 800.336.7778  
F: 877.286.6515

LIT-FS-25 | V. 092115